

A worker wearing a green shirt, blue jeans, and red safety earmuffs is operating a large industrial machine in a paper mill. The machine features large, white, cylindrical paper rolls and various mechanical components, including rollers and a control panel with a red emergency stop button. The background shows the industrial setting with overhead lighting and structural elements.

Atlas Copco

**Design out downtime:
robust air motors
for paper and carton
machinery**

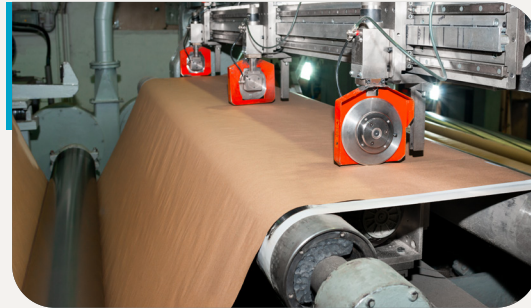
Reliability engineered for paper and carton machinery

We understand that in paper and carton machinery design, every component choice is a calculation of risk. A single failure can lead to costly downtime, impacting your success. Our air motors are engineered to be the safe, reliable solution for your most demanding applications, preventing failure and simplifying integration.



Waste stripping tools

Ideal for high-shock waste stripping, our motors stall indefinitely under load without damage, preventing burnout. Their high power density ensures easy integration into compact tooling.



Precision blade sharpeners

Inherently spark-free, our ATEX motors are the safe choice for dusty sharpening areas, eliminating ignition risk. They provide smooth, controllable power and resist abrasive environments.



Roll tensioning and winding

Prevent costly web breaks on winders. Our overload-proof motors provide constant tension and can stall without damage. Simple, low-cost control.



Mixers and agitators

Ensure reliable mixing in wet, corrosive, washdown environments. Our motors handle the high, variable torque of thick pulp slurries, providing the 24/7 reliability needed for stock prep.



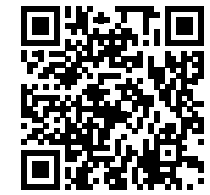
In-line printing units

The default choice for safety in printing units with solvent-based inks. Our ATEX motors are intrinsically spark-free and offer simple, low-cost speed control without expensive VFDs.

Stop designing around component failure points. Contact us for a technical consultation and the reliability data you need to make the safe bet.

Simple, robust power for complex machinery

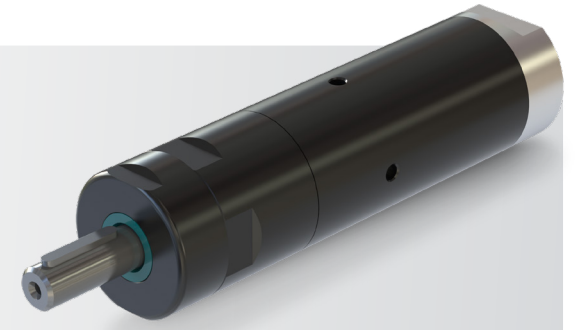
The right drive technology is key to performance and reliability. Our portfolio offers a specific air motor solution for every challenge in your mill. Select the optimal motor for your design.



Scan the QR to know more

The versatile workhorse - LZB vane motors

Your defense against downtime. The slim LZB vane motor prevents costly redesigns. A stainless steel option resists corrosion, and its 5-vane design ensures high starting torque.

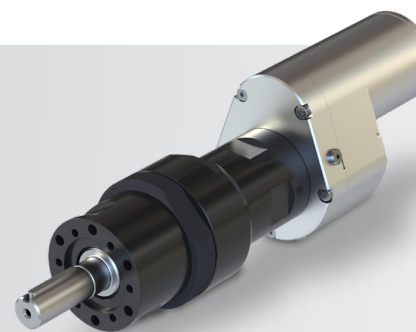


The stable, high-torque choice - LZL direct drive vane motors

Strong starting torque for sustained low-speed use. Choose Direct Drive or Helical Gears (stainless steel available). **Integrate real time speed monitoring, allowing you to monitor output speed for precise process control.**

PZB piston air motors

Excels at low speeds with high torque, ideal for mixers and tensioning. Consumes 40% less air than vane motors, a key TCO advantage. **All models are speed sensor ready, enabling real-time data for process control**



Extreme power-to-weight for high-speed precision TZB turbine motors

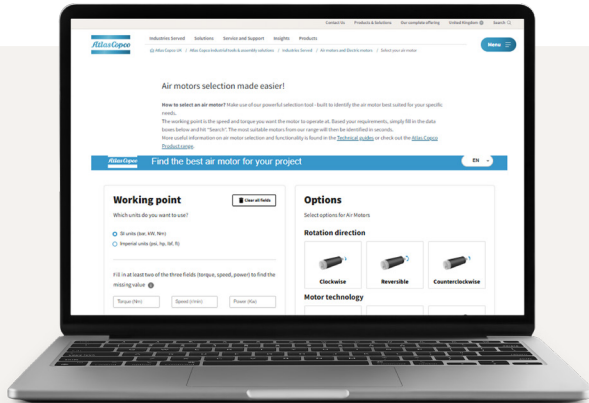
Extreme power with an unmatched power-to-weight ratio; 10x lighter than vane motors. An integrated governor ensures constant speed for precision cutting or deburring

Arming you for success

The right technology choice is critical to your design's success. Our application specialists are ready to help you analyze your requirements and select the optimal motor to ensure performance and reliability. Let's build the business case for your project together.

From specification to integration in minutes

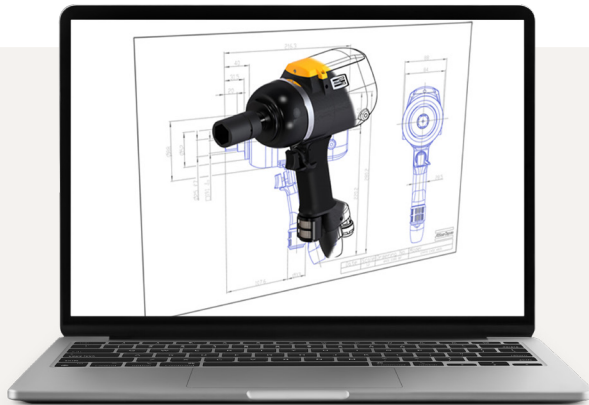
instant sizing and native CAD downloads



Scan the QR
to know more

Get the right motor every time in less than 1 minute

Just enter the required working point for the application and the most suitable air motor will automatically be selected



Scan the QR
to know more

3D drawing library

Get compatible CAD models instantly

Available
formats



Atlas Copco

Atlas Copco AB

(publ) SE-105 23 Stockholm, Sweden

Phone: +46 8 743 80 00 | Reg. no: 556014-2720

atlascopco.com